

## Welcome to the Fiji National University Library News and Announcements

### Inside this Issue

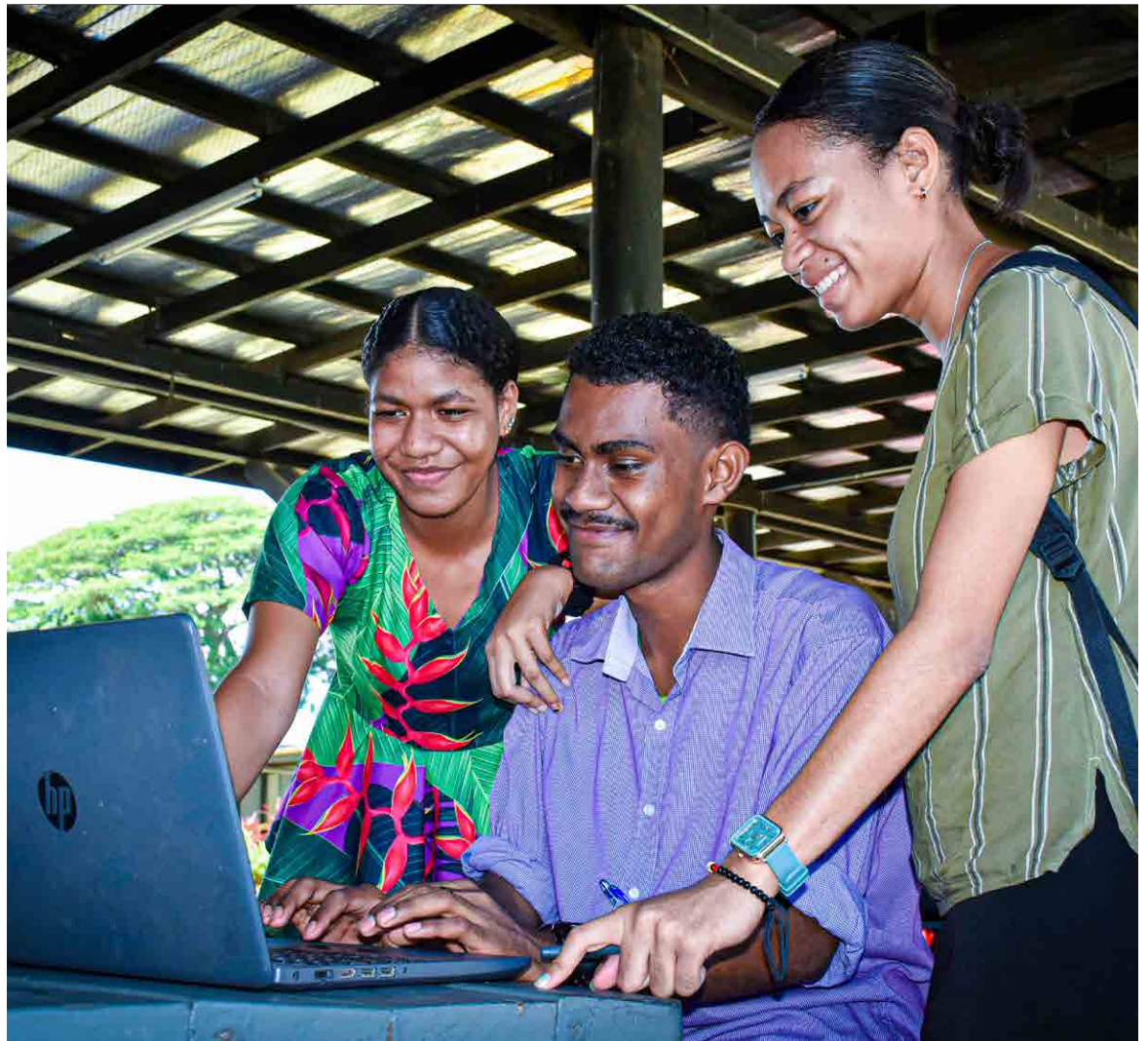
- Welcome
- Your FNU Library
- User Engagement Services
- Library Webinars and Training
- Library Events
- Key Dates
- New Arrival

Greetings and welcome to the Fiji National University Library, where you'll discover intelligent spaces designed to facilitate your learning needs. As we embark on Semester Break, we hope you're enjoying a delightful stay with us.

Libraries at FNU serve as vital community hubs, offering access to a wide range of services including broadband, computers, classes, and programs, as well as a diverse collection of books, movies, and other media. However, perhaps most importantly, libraries

serve as connectors, fostering connections among individuals.

The FNU Library offers a comprehensive blended service essential for immersive, high-quality learning and discovery. We provide continuous, enhanced access to virtual and physical learning, teaching, and research resources to support both in-person and digital formats. Many of our resources are accessible digitally, while our physical libraries remain open for in-person visits.



### Key Dates

1. Revised library operating hours



## User Engagement Services

The Fiji National University (FNU) is dedicated to supporting students and staff in their academic pursuits through various means, including information literacy sessions. These sessions are conducted by the User Engagement Librarian to enhance students' learning, teaching, and research abilities. Information literacy sessions at FNU are designed to equip students and staff with the skills to locate, evaluate, and effectively use information from various sources. These sessions are conducted by the User Engagement Librarian at each campuses, who is responsible for promoting information literacy among the FNU community. The sessions are usually held in the library and at ICT labs, and they cover topics such as database searching, citation styles, plagiarism, and academic integrity. One of the ways the User Engagement Librarian supports learning is by offering tailored sessions for individual courses. The librarian works with course coordinators to identify the specific information literacy needs of their courses and develops sessions to address them. The User Engagement Librarian also supports teaching by conducting sessions for lecturers on how to incorporate information literacy into their teaching. These sessions help lecturers to design assignments that require students to use information literacy skills, such as locating and evaluating sources. These sessions are aimed at both students and staff and are designed to enhance their research abilities.

## Know your Libraries Operating Hours



Library  
Opening Hours  
2024

| LIBRARY     | MONDAY TO THURSDAY | FRIDAY    | WEEKENDS (SATURDAY & SUNDAY) | PUBLIC HOLIDAY |
|-------------|--------------------|-----------|------------------------------|----------------|
| Nasinu      | 7am - 8pm          | 7am - 8pm | 7am - 8pm                    | 8am - 4:30pm   |
| Koronivia   | 7am - 8pm          | 7am - 8pm | 7am - 8pm                    | 8am - 4:30pm   |
| Lautoka     | 7am - 8pm          | 7am - 8pm | 7am - 8pm                    | 8am - 4:30pm   |
| Pasifika    | 7am - 8pm          | 7am - 8pm | 7am - 8pm                    | 8am - 4:30pm   |
| Samabula    | 7am - 8pm          | 7am - 8pm | 7am - 8pm                    | 8am - 4:30pm   |
| Nadi        | 7am - 8pm          | 7am - 8pm | 8am - 4:30pm                 | 8am - 4:30pm   |
| FSM Tamavua | 7am - 8pm          | 7am - 8pm | 8am - 4:30pm                 | 8am - 4:30pm   |
| FSN Tamavua | 7am - 8pm          | 7am - 8pm | 8am - 4:30pm                 | 8am - 4:30pm   |
| Labasa      | 7am - 8pm          | 7am - 8pm | 8am - 4:30pm                 | 8am - 4:30pm   |
| Ba          | 8am - 4:30pm       | 8am - 4pm | Closed                       | Closed         |
| Nabua       | 8am - 4:30pm       | 8am - 4pm | Closed                       | Closed         |
| Naduna      | 8am - 4:30pm       | 8am - 4pm | Closed                       | Closed         |
| Maritime    | 8am - 4:30pm       | 8am - 4pm | Closed                       | Closed         |
| NTPC Narere | 8am - 4:30pm       | 8am - 4pm | Closed                       | Closed         |
| NTPC Naceva | 8am - 4:30pm       | 8am - 4pm | Closed                       | Closed         |
| NTPC Nasese | 8am - 4:30pm       | 8am - 4pm | Closed                       | Closed         |

For more information, Email: [EOLibrary@fnu.ac.fj](mailto:EOLibrary@fnu.ac.fj) or Contact: 16701 330 4000 Ext: 2808

Care | Honesty | Accountability | Service | Excellence | [www.fnu.ac.fj](http://www.fnu.ac.fj)

Follow us on:

## Mapping New Territories: Exploring the Depths of EBSCO Database

The User Engagement Librarians, Interactive Media Technologist together with the Senior Librarian-eLearning, met with EBSCO Regional Sales Manager – QLD & Pacific Islands, Ms. Heather Anderson, for a brief discussion with the EBSCO database. Over steaming cups of coffee, at the Holiday Inn hosted by EBSCO, ignites the session with insights and interactions on new features to the new addition for the Medical School, the DynaMed database. The engaging hours of 8am to 9am were informative and encouraging, furthering enriched understanding of the EBSCO platform.

Further to mapping new territories, coordinated with JoVE database representative Mr. Patrick Ivory for a trial session scheduled for the month that is April 8th until Friday 24th May 2024. JoVE (Journal of Visualized Experiments) is a peer-reviewed scientific video journal. It is a unique database that publishes experimental techniques in a video format, allowing researchers to visually learn and replicate various scientific experiments and

methodologies across a wide range of disciplines, including biology, medicine, chemistry, physics, engineering, and more. This database, JoVE, is one we need to explore. Great find!





## Collaborative Initiatives between the Library and the Center for Graduate Studies

The library in collaboration with the Center for Graduate Studies works together to enhance learning with the postgraduate scholars of the Fiji National University. Recently, on May 6th and 10th, the library conducted EndNote training for interested staff and students. The first session was held on Monday 6th of May at Nasinu Campus for the Central division and on Friday, the 10th for the staff at Natabua Campus. Two sessions were conducted

on the Lautoka campus where 17 eager participants attended. EndNote 21 is the latest version of Reference management software designed to assist researchers in tracking and recalling references to relevant works of literature. In addition to the training, a database session was conducted where participants were introduced to the database. During this session, they practiced searching for information and exporting it to EndNote

to populate their EndNote accounts. Participants were asked to evaluate the session, and many expressed the need for more hands-on training with databases to effectively search for information relevant to their research. Gradually, the library continues to collaborate with the Center to provide SPSS training for both Central and Lautoka, incorporating a statistical tool into the sessions.



## SAGE Research Method Webinar

The FNU library hosted the SAGE Research Methods webinar on May 17, 2024. Ms. Mira Kurmanbayeva, Sage's Senior Sales & Market Development Executive, trained participants on using the SAGE Research Methods platform to enhance their research skills and explored its unique features and key tools. After the webinar, participants took part in an online quiz, and the library team presented prizes to the winners on behalf of Team SAGE.



## Customer Service Training

Customer service training is a valuable process that equips employees with the knowledge, skills, and attitudes required to deliver exceptional service to customers. Effective customer service training ensures that employees understand the importance of customer satisfaction, know how to handle various customer interactions, and can effectively resolve issues or address concerns.

Two sessions will be conducted on below dates:

| Customer service training |  |
|---------------------------|--|
| 21 June 2024              | Central Staff (face to face) & Labasa (Zoom) |
| 28 June 2024              | Western Staff (face to face)                 |



## SPSS Training

This training is perfect for students, researchers, and faculty members who want to leverage SPSS for their research projects. Whether you are new to SPSS or looking to refine your skills, this session will provide valuable insights and hands-on experience.



## Library Events

The U.S. Ambassador and diplomats visited the Natabua Library, where the Senior Librarian, Ms. Mousmin, conducted tours for the delegates. She provided detailed information about the library's services, resources, and the digital library platform. The ambassadors were highly impressed by the FNU Digital Library and expressed a keen interest in learning more about it.



## Earth Day

On 22nd April, Libraries did displays to honor Mother Earth and pledge to protect and preserve our environment for future generations.

Whether it's planting trees, reducing waste, or simply spending time outdoors appreciating nature's beauty, every action counts in making a positive impact on our planet.

Let's commit to living more sustainably, embracing eco-friendly practices, and advocating for environmental conservation. Together, we can make a difference and ensure a greener, cleaner, and more sustainable world for all.





## World Book and Copyright Day!

World Book and Copyright Day, celebrated annually on April 23rd, is a day dedicated to promoting reading, publishing, and copyright protection. All libraries had displays to honor the power of books to inspire, educate, and unite us all. Let's take a moment to appreciate the authors, publishers, and readers who contribute to the vibrant world of literature.



## Celebrating Cultural Heritage: Girit Day and Ratu Sukuna Day

On May 13th and May 31st, the FNU Library commemorated Girit Day and Ratu Sukuna Day, respectively, across all 16 campuses. Our libraries hosted book displays to create awareness and celebrate these important cultural events. We were thrilled to engage with our library users and promote the richness of our resources and services.





## Empowering Women: Mother's Day Celebration

In recognition of the remarkable women employees of the FNU Library, we held a special Mother's Day celebration. Through captivating displays, we expressed our respect and appreciation for their invaluable contributions to our institution. This event aimed to raise awareness and foster an environment of equality and recognition.

## World Environment Day

**World Environment Day (WED)**, celebrated annually on June 5th, is the United Nations' principal vehicle for encouraging awareness and action for the protection of the environment. Established in 1972 by the United Nations General Assembly, WED serves as a global platform for public outreach, with participation from over 143 countries. Library has done the display on the world environment day educating the users about environmental issues and inspiring positive actions towards sustainability.



## Campus Library tour for New Library Recruits

A comprehensive library tour for new recruits was done for familiarizing them with the library's layout, resources, services, and workflows, by thoroughly preparing and conducting a detailed and engaging library tour, new recruits will gain a strong foundation in the library's operations, resources, and culture, setting them up for success in their new roles.







## NEW ARRIVALS

The library continues to add quality, relevant and exciting new resources to its collections.

<https://www.fnu.ac.fj/library/new-arrivals/>

Name: Dr. Udyā C. Shukla  
Email: [ul@fnu.ac.fj](mailto:ul@fnu.ac.fj)  
Position: University Librarian  
Section: Department of Library Services

## Contact Information

**Name:** Dr. Udyā C. Shukla  
**Email:** [ul@fnu.ac.fj](mailto:ul@fnu.ac.fj)  
**Position:** University Librarian  
**Section:** Department of Library Services

**Name:** Sanjeshni Chand  
**Email:** [ql@fnu.ac.fj](mailto:ql@fnu.ac.fj)  
**Position:** Quality Liaison Officer  
**Section:** Department of

For any suggestion or any enquiries:  
[fnu.library@fnu.ac.fj](mailto:fnu.library@fnu.ac.fj)



 Facebook:  
[@FNULibrary](https://www.facebook.com/FNULibrary)

Follow us on Facebook for all latest resource updates, news and many other interesting information. You may also chat with our representatives for information on the go!