



FIJI NATIONAL UNIVERSITY

10 ANNIVERSARY CELEBRATING 2010-2020 YEARS

# NEWSLETTER

January - August 2020 • Issue 1

## In this Issue

### OVERVIEW

### PROJECT OF THE QUARTER

### HIGHLIGHTS

Signage Manual - Wayfinding for FNU Stakeholders

Prosthetic Lab - Pasifika Campus

Sports Complex Generator Installation - School of Nursing

## Overview

Welcome to the Division of Capital Projects & Infrastructure's first issue of the newsletter. The year 2020 marks with some major accomplishments and challenges which the Division encountered.

## Project Highlights

### Solar PV Project at Nadi Campus

The Division ventured in the first green energy Project boasting 250KW solar photovoltaic (PV) plant with roof and ground-mounted systems to generate clean energy serving for up to 80% of Campus power demands which was championed by the Director, Mr. Chettiar. The system was installed by the CBS Power Solutions Fiji Ltd, expecting to be completed in April 2020 but delayed due to COVID-19 restrictions. The project was ultimately commissioned in June 2020. The official launching of the Solar PV system was done by the Acting Vice Chancellor, Ms. Tessa Price on the 21st of August 2020 at the Namaka Campus.

The ground mount system was specifically meant for educational purposes allowing students for easier access to the system for training. The setup has a built-in Online Monitoring System (SMA Portal) for viewing production and system details at any time. Software designed specifically for this project, also the first in the region, is being used for presenting the technical information in an "easy-to-understand" terminology and graphics. The project is deemed to be self-funded with an expected return on investment of 8 years. The use of solar reduces energy costs and helps with environment conservation by lowering greenhouse gas emissions. This project supports national priority on sustainable development initiatives and renewable energy sources.

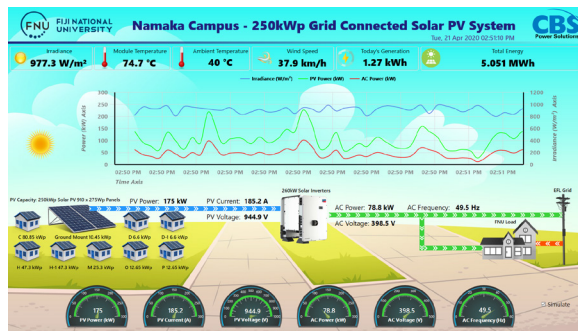
Division of Capital Projects & Infrastructure

Nasinu Campus  
P.O. Box 7222,  
Nasinu, Fiji Islands  
www.fnu.ac.fj  
Ph: 339400 | Ext: 2758

Email your suggestion or comments:

dcpi@fnu.ac.fj

Design & Layout  
Division of Marketing & Communications



# Highlights

## Signage Manual - Wayfinding for FNU Stakeholders

Diadem NZ Pty Ltd was engaged on the 12th of February 2020 as a wayfinding and signage consultant for the University. The consultant will formulate a 'Signage Manual' ensuring FNU building and wayfinding signs are standardized across all campuses and create a unique system specific to the FNU brand for all campus users. Despite the travel restrictions, the project team has been continuously meeting online to ensure the project objectives are met. The Signage Manual is expected to be ready by September.

## Prosthetic Lab - Pasifika Campus



The existing Dental Prosthetic Teaching Lab used the College of Medicine, Nursing, and Health Sciences located in the Ministry of Health building had to be closed late last year. Existing space within building C of Pasifika Campus was refurbished to receive the dental prosthetic teaching lab. The newly refurbished lab is highly technical providing greater flexibility whereby students and teachers will significantly thrive in a space that is safe, healthy, and designed for learning. The project has been a significant milestone achievement where due to good collaboration from the Project Stakeholders, the project was delivered in a very short timeframe, despite the opening of the facility being delayed due to the COVID-19 pandemic. The project was completed by Northern Building Works.

## Sports Complex

The long-awaited state-of-the-art Sports Complex Project is almost coming to an end. This \$9m project was designed by Conway Architects and Fortech Construction Ltd was contracted. The provision of modern equipment and facilities will support and enhance staff and students' performances in terms of physical & mental health, and learning & teaching. COVID-19 pandemic has hindered the project by causing delays in material and equipment delivery, limiting progress, and restricting the travel of specialist installers from abroad for installation indent items such as gym equipment and flooring systems for the court. The Division is challenged with seeking alternative solutions wherever possible to complete the project as soon as possible.



## Generator Installation – School of Nursing

The Division in its efforts to upgrade the campus infrastructure has completed electrical infrastructure upgrade works at the School of Nursing following completion of upgrade works in the College of Agriculture, Fisheries and Forestry, Lautoka Campus, and Nasese Campus. The project included replacing the main electrical switchboards to comply with current standards, and as well as make provision for future expansions. A generator has been installed which provides back-up to the whole of campus. This project will ensure that there will be minimal disruptions to teaching and learning activities during EFL power outages and assist in disaster management.